



STEP Inc. Newsletter

Community Based Environmental Conservation Since 1978. No.105 November 2000

COMING EVENTS

MAP LAUNCH --at the risk of becoming tedious, this is the final reminder to members about the map launch, which will take place at 7.30 pm on Thursday, 9th November, 2000, at Jenkins Hall in Lane Cove National Park.

Peter Duncan, Director of Centennial Park and Moore Park Trust, will do the honours, and there will be champagne and other refreshments and finger food.

If you have forgotten to send your RSVP, there is room for one or two more if you call Neroli on 9489 5794, but hurry or you'll miss out.

CHRISTMAS BARBECUE -- This has become a definite must-be-there annual event.

It will again be at the rear of Leuna Ave., Wahroonga, where Harry and Neroli Lock will provide the facilities.

Bring your own food and drink and join us to reflect on the year's events and talk about the new project at Morona Ave. with local residents, who will hopefully join us also.

We will start at 5.00 pm and there will be plenty of daylight left for the kids to play on the grass and the playground.

Annual General Meeting

The STEP AGM was held on Wednesday, 18th October, at St. Andrews Uniting Church Hall, South Turramurra.

The formal agenda, consisting mainly of President's report, Treasurer's report and the election of office bearers was concluded expeditiously, to be followed by a talk by Dr. Lesley Hughes.

The President's report and a summary of Dr. Hughes' address are reproduced later in this newsletter. Copies of the Treasurer's report and the audited accounts were handed to attendees at the meeting, but will not be reproduced in the newsletter. Information is available to members from the Treasurer if required.

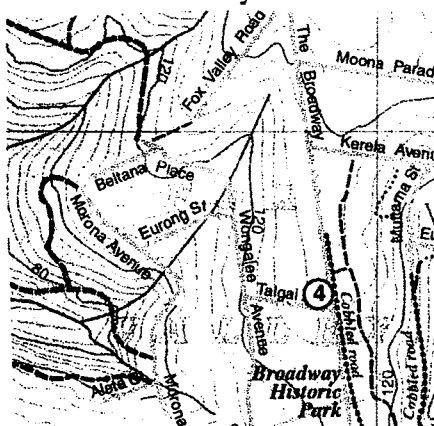
The new committee is:

Michelle Leishman -- President,
Hugh Roberts -- Treasurer and Public Officer,
Chris Maxworthy -- Secretary, and other members are
Neroli Lock, Helen Wortham, Bill Jones, John Martyn and Bruno Krockenberger.

President's Report

My report this year is in abbreviated form, due to time pressures, but

STEP's activities have been no less hectic than in other years.



The year 2000 has significance for us, not for the Olympics, but for the great effort that has gone into the production of our new map for the walking tracks in the Lane Cove Valley.

The launch of the map will be on 9th November, and I trust that many of you will be there.

On that subject I would like to record my thanks to John Martyn and his team of volunteers for the tremendous effort he and they have put into this project. Without John's enthusiasm and the donation of his time and the use of his sophisticated computer equipment it

would not have been possible to produce a map of such quality and elegance.

STEP will benefit by reputation and financially from the publication of this map for years to come, and that will enable us to undertake more extensive work to enhance the appreciation and enjoyment of our urban bushland.

Now to report on the year as a whole:

Committee

The committee has met monthly, except January, to deal with the business at hand, in addition to planning meetings for the map launch.

Unfortunately Jennifer Schwarz tendered her resignation from the committee during the latter part of the year and we thanked her for her contributions and expressed the hope that she would be able to rejoin at some future date.

The committee has worked smoothly and effectively, and I take this opportunity to thank them all.

Representation

STEP has been represented on Ku-

ring-gai Council's Bushland Advisory Committee, and has remained a member of the Union of Lane Cove Valley Conservationists, although we have had problems in attending their meetings.

Activities

We organised 2 bushwalks during the year, the autumn walk from Fiddens Wharf to Lane Cove National Park and the Spring Slippery Dip Walk in Garigal National Park.



The two talks for the year were by Valerie Close on the "Backyard and Beyond" and by Nancy Pallin on "The Role of Bats in the Bushland Ecology".

Newsletters

Although the timing wasn't always right we published the usual six newsletters for the year, and provided a monthly column for the Ku-ring-gai Observer for most of the year.

Submissions

STEP made formal submissions to Ku-ring-gai Council regarding the Residential Strategy, Canoon Rd. Draft Plan of Management, The SEPP 5 Application for Mt. Pleasant Ave., and to the Project Managers of The Parramatta Rail Link.

We also pursued the matters of the Mona Vale road Corridor and the funding for the incorporation of the extra bushland from Hornsby Council etc into the Lane Cove National Park by letters to relevant authorities.

Financial

STEP's finances continue to be in good shape and will further improve as a result of map sales. Our Treasurer, Hugh Roberts, will present his report shortly.

I would like to take this opportunity to thank Hugh for his unstinting efforts to sort out our accounting and membership system and deal with the various investments. Things are now running more smoothly than ever before. Apart from his treasury duties, Hugh has also acted as Secretary and Public Officer.

EPA Grant

STEP was successful, in conjunction with Ku-ring-gai Council and NPWS, in obtaining a grant from the Environment Protection Authority for work over a three year period to control the stormwater pollution and weed infestation occurring at Morona Ave., Wahroonga, thanks to the efforts of Neroli Lock and Michelle Leishman.

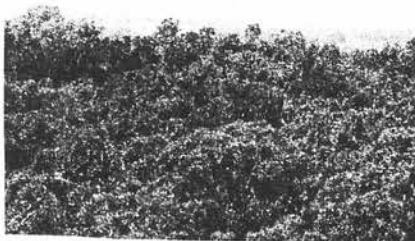
STEP's role in this project will be to provide the web site educational material relating to the project and a continuing coordination effort.

The Coming Year

STEP faces the challenges which tend to come from unexpected corners, in addition to the known challenges such as the

- * B2/B3 Rezoning exercise,
- * Residential Strategy,
- * Parramatta Rail Link

and the ongoing SEPP 5 schemes.



But perhaps the biggest challenge for the coming year will be to find suitable ways of promoting our objectives with the resources, which we have been able to generate over a few years, and which will continue to flow. We will need to devise educational or direct action projects, such as the Morona Ave. project, to make a positive contribution to the conservation of our environment.

The new Committee will need to address this challenge urgently, and any suggestions or ideas from you, the members, would be greatly appreciated.

Finally I would like to thank you all for your support during the 1999/2000 year.

Bruno Krockenberger.



Climate Change -- Is It Upon Us?

Dr. Lesley Hughes from the Department of Biological Sciences, Macquarie University, concentrated on the mounting evidence of biological reaction to climate change.

She started with the climate records which show that the average global temperatures have risen steadily during the 20th century, with 1998 being the warmest year ever recorded.

Average global temperatures are predicted to rise by 1-3.5 degrees C in the 21st century.

A 1 degree temperature change